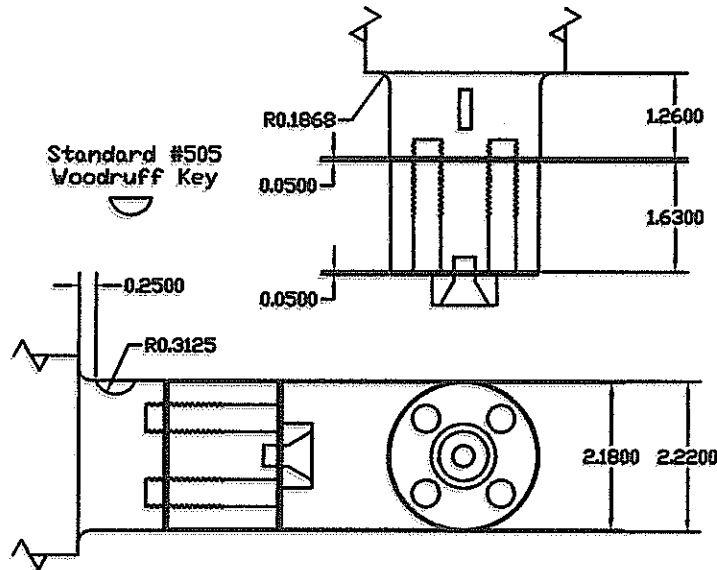
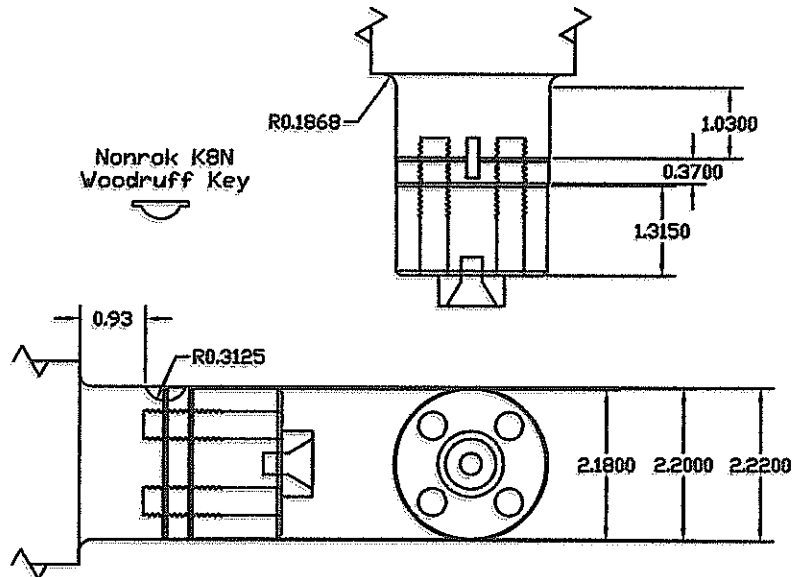


Crankshaft Identification for 4.5 Power Tech Engines

This Bulletin is an easy way for identification of the 4.5 Power Tech crankshafts. The pictures below are of the damper end of the crankshafts NRE50618 and NRE504638.



The woodruff key on the NRE50618 is located to the back of the snout toward the main bearing.



Crankshaft NRE504638 has the woodruff key located more to the middle of the snout and will use a Nonrok woodruff key. The snout on the NRE504638 also has one more step for the injector pump trigger plate.