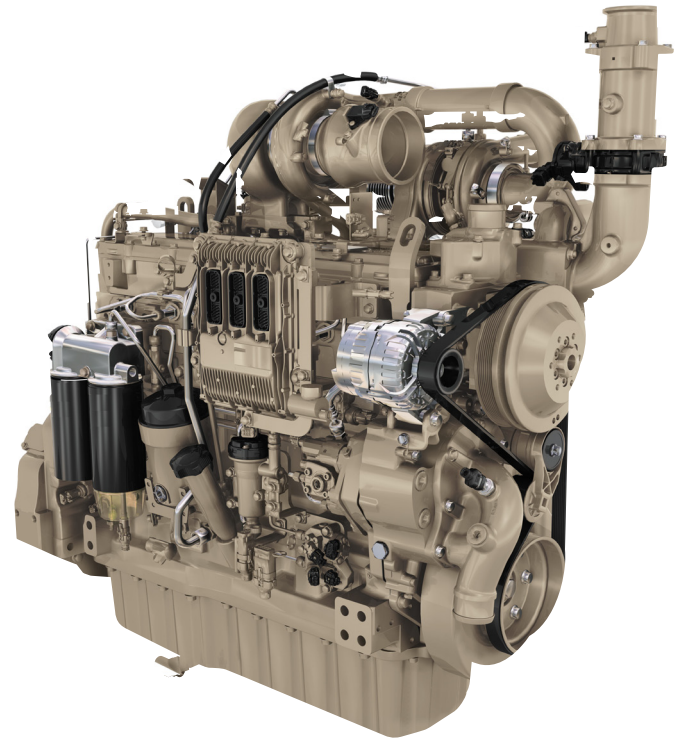
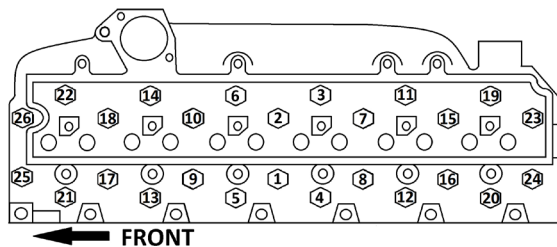




Torque and Rebuild Specifications for John Deere Powertech 6.8 Liter Engines.



Cylinder Liner Protrusion	.001" - .004"
Main Bearing Cap	100 ft. lbs.
Connecting Rod Bolt	43 ft. lbs. +90°
Piston Protrusion	.003" - .010"
Crankshaft End Play	.001" - .014"
Cylinder Head Bolts	75 ft. lbs.



110 ft. lbs.
 Wait 5 minutes
 110 ft. lbs.
 Tighten an additional 60°

Rocker Arm Support Studs	44 ft. lbs.
Valve Clearance (set cold) (2 Valve Head)	I .014" E .018"
w/#1 @ TDC Comp Adjust	#11E, #2I, #3E, #4I, #5E
w/#1 @ TDC Exhaust Adjust	#2E, #3I, #4E, #5E, #6I
Rocker Cover Bolts	26 ft. lbs.