

RELIANCE POWER PARTS

JOHN DEERE 6090 (9.0L)

Engine Kits & Component Parts



Complete aftermarket overhaul Tier III engine kits



Cylinder head repair kits & component parts



Substantial cost savings vs. the OEM



Provides optimal engine performance

The first complete aftermarket engine kits are now available!

Machine Coverage

Tractors, combines, industrial, and marine engines from 225 to 360 horsepower range:

Tractors:

8130 8330
8225R 8330T
8230 8335R
8230T 8335RT
8235R 8345R
8245R 8345RT
8260R 8360R
8270R 8360RT
8285R 8370R
8295R 8370RT
8295RT 8430
8310R 8430T
8310RT 8530
8320T 9230
8320RT

Combines

9660STS 9770STS
9670STS 9780CTS
9760STS

Crawlers

850J 850JR

Excavators

350DLC
350GLC
E330LC
E360

Forage Harvesters

7180 7250

Forestry

1270D 903K
1270E 909K
1270G 953K
1470E 959K
1470G

Graders

670G 772G
670GP 72GP
672G 870G
672GP 870GP
770G 872G
770GP 872GP

Sprayers

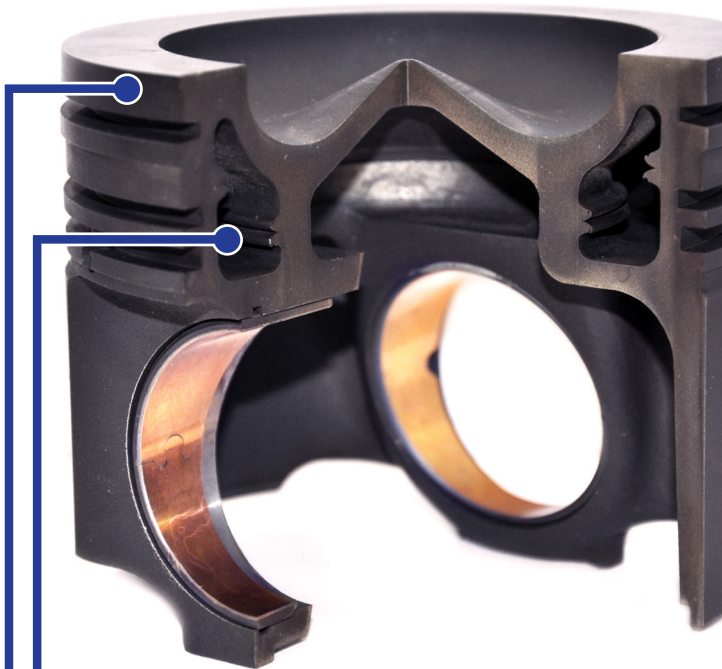
4930 R4038
4940

Loaders

724K 744K

Coverage for John Deere 6090 Engines

PRODUCT LINE / The Reliance John Deere 9.0L product line offers excellent coverage, extensive product support and product quality that will provide engine owners the kind of performance that they have come to expect from their 9.0L engines.



Our new parts have been designed specifically for these engines and include these features:

INTERNAL COOLING GALLERY

The piston is a high strength, high ring steel piston with an internal oil gallery to aid in cooling of the piston combustion bowl and rings. The piston includes a low friction, wear reducing coating.

DURABLE GRAPHITE COATING

Multi-layer design with a steel core that provides strength and durability, while the graphite material ensures a good seal. Performs in extreme temperatures and pressures.

IMPROVED OIL CONTROL

Cylinder liners have a directed cooling channel around the top flange. Coolant flow in this groove supplies increased cooling around the piston and rings, providing improved oil control and durability.

RELIANCE	OE PART	DESCRIPTION
RP1355		Overhaul Kit
RP1354		Inframe Kit
NDZ10211	DZ10211, RE545266, RE571507	Cylinder Kit
NRE528400	RE528400	Overhaul Gasket Set
NRE528402	RE528402	Head Gasket Set
NR526607	R526607	Valve Cover Gasket
NRE543639	RE543639	Front Crankshaft Seal
NRE520036	RE520036, RE530121	Rear Crankshaft Seal
RP1356		Exhaust Manifold Bolt & Spacer Kit
NRE529318	RE529318	Rod Bearing (std)
RP1305		Rod Bearing (.011")
NRE529319	RE529319	Main Bearing (std)
NRE534181	RE534181	Main Bearing (.011")
NRE534182	RE534182	Main Bearing (.022")
NRE529320	RE529320	Main Thrust Bearing (std)
NRE534183	RE534183	Main Thrust Bearing (.011")
NRE534184	RE534184	Main Thrust Bearing (.022")
NR519287	R519287	Main Bearing Cap Bolt
NR74008	R74008	Connecting Rod Bushing
NR501035	R501035	Connecting Rod Bolt
NDZ100946	DZ100946, R121322	Cylinder Head Bolt
NR521261	R521261	Rocker Shaft Bolt
NR504811	R504811	Camshaft Thrust Washer
NR87561	R87561	Camshaft Bushing
NR82007	R82007	Camshaft Plug
RP959149		Valve Train Kit
NR520223	R520223	Intake Valve
NR520224	R520224	Exhaust Valve
NR520798	R520798	Valve Lock Half
NR527286	R527286	Valve Guide
NR504235	R504235	Valve Spring



Engine Information

ENGINE IDENTIFICATION / The engine serial number is critical to identification of correct parts. The ESN plate is located either on the right-hand side of engine between the oil filter base and fuel pump (viewed from the flywheel end), or on the left-hand side of the engine directly above the starter.

In addition to the serial number plate, engines have an engine option code label affixed to the rocker arm cover. These codes indicate which of the engine options were installed on your engine at the factory. These option codes may also be needed to identify correct parts.

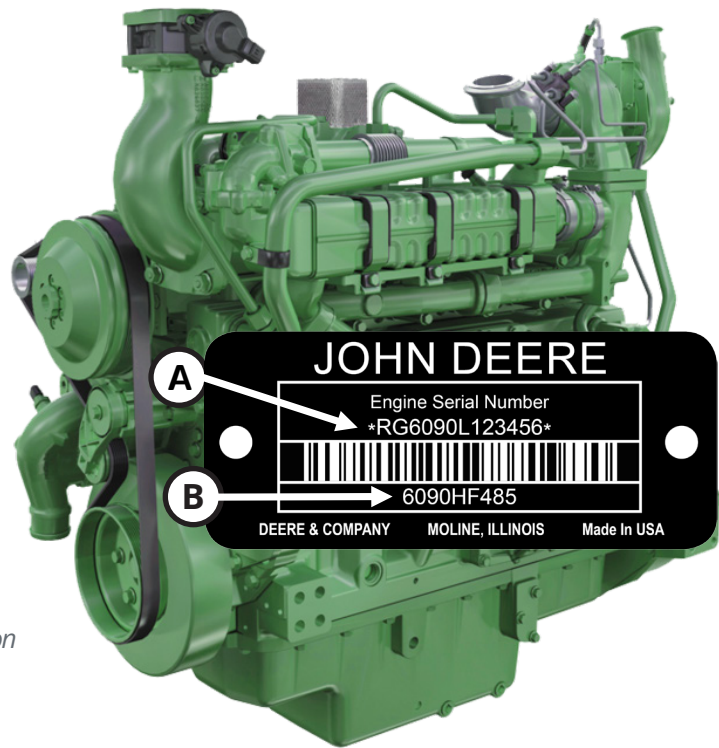
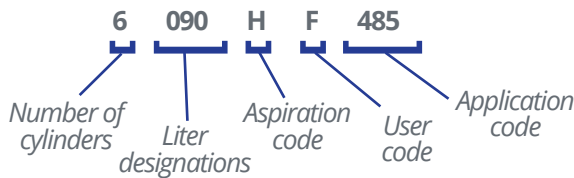
ITEM	SPECIFICATION
Number of Cylinders	6
Bore x Stroke (mm)	118 X 136
Bore x Stroke (in)	4.66 X 5.34
Displacement (liter)	9.0
Displacement (cu. In.)	548

(A) Engine Serial Number



EMISSION LEVEL	
L, M, N, P	Tier 3/Stage IIIa
R, U, V, W, X, Y, Z	Tier 4/Stage 4

(B) Engine Application Data



ENGINE DETAILS / Reliance engine kits cover model years 2006-2013 with Tier 3 emissions. The 6090 is the replacement for the popular 6081 engine. Features of this bigger bore and longer stroke engine include:

- ✔ Single-piece steel pistons
- ✔ Directed top liner cooling
- ✔ 4 valves per cylinder
- ✔ Coolant cooled exhaust gas recirculation (EGR)
- ✔ High pressure common rail fuel system (HPCR)
- ✔ Roller camshaft followers
- ✔ Piston cooling nozzles in block

☎ 800-342-2545 (8 AM - 8 PM EST) MON - FRI

➔ RELIANCEPOWERPARTS.COM

RELIANCE POWER PARTS

NOW AVAILABLE
THE FIRST COMPLETE
AFTERMARKET ENGINE KITS

JOHN DEERE
6090 (9.0L)

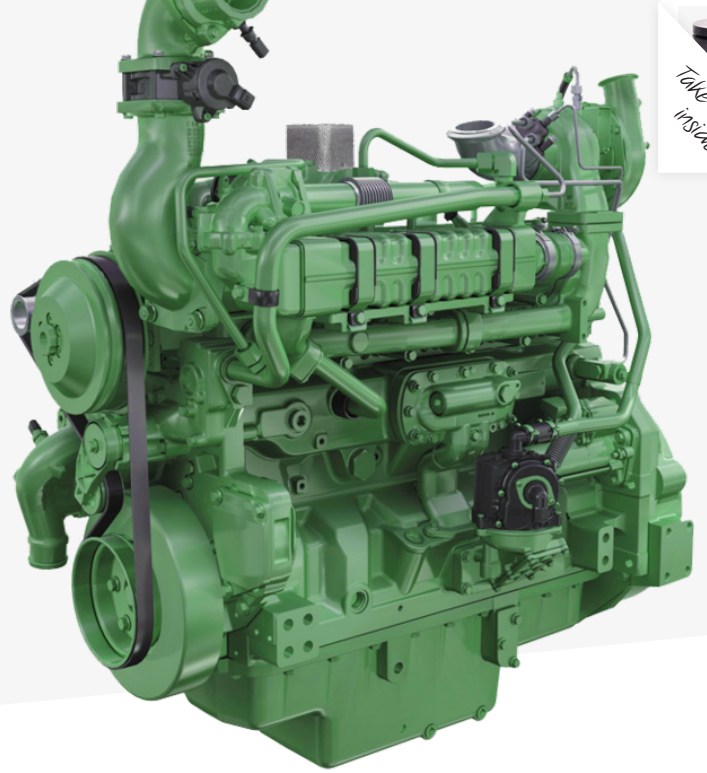


DISTRIBUTION CENTERS:

Phoenix, AZ Lynn, IN
Lincoln, NE Jacksonville, FL
Harlan, IA Winnipeg, MB

800-342-2545

WWW.RELIANCEPOWERPARTS.COM



www.reliancepowerparts.com 800-342-2545

PO Box 408, Lynn, Indiana 47355-0408

RELIANCE
POWER PARTS

